

MT-25 Light tank

History:

On the 9th of February of 1943 an unsolicited letter was recieved at the Chair of the State Committee of Defense of the Union of Soviet Socialist Republics containing a short destription and a set of design drawings for a new type of light tank. The "Moto-Tank 25".

The letter contained the following tekst:

"To the Chair of the State Committee of Defense of the Union of Soviet Socialist Republics, I.V. Stalin.

Fulfilling our duty to the Motherland in this period of relentless and heroic struggle of the Soviet people against the German fascist occupants, and protection of our honour, freedom, and independence, we developed blueprints of a new combat vehicle.

During development, we have considered the following factors:

High movement speed.

Low damage as a result of being hit.

Large operational range.

Ability to suddenly attack the enemy.

The vehicle we have developed is called MT-25, and is a wheeled vehicle, with every wheel being a drive wheel. If tracks are added, the MT-25 becomes a tracked vehicle. The vehicle's mass is 25 tons. The average speed is 40-45 kph, maximum 100 kph.

Since every wheel is a drive wheel, the vehicle is very survivable. Even if half of the wheels are disabled, the vehicle does not stop. When the engine uses a muffler, the vehicle moves silently.

Armament: 47 mm gun and 3 machine guns.

We ask you to consider our proposal and accept it as a gift in honour of the Red Army's 25th anniversary.

Engineers F.F Gorodkov

A.I. Starodubtsev

February 9th, 1943"

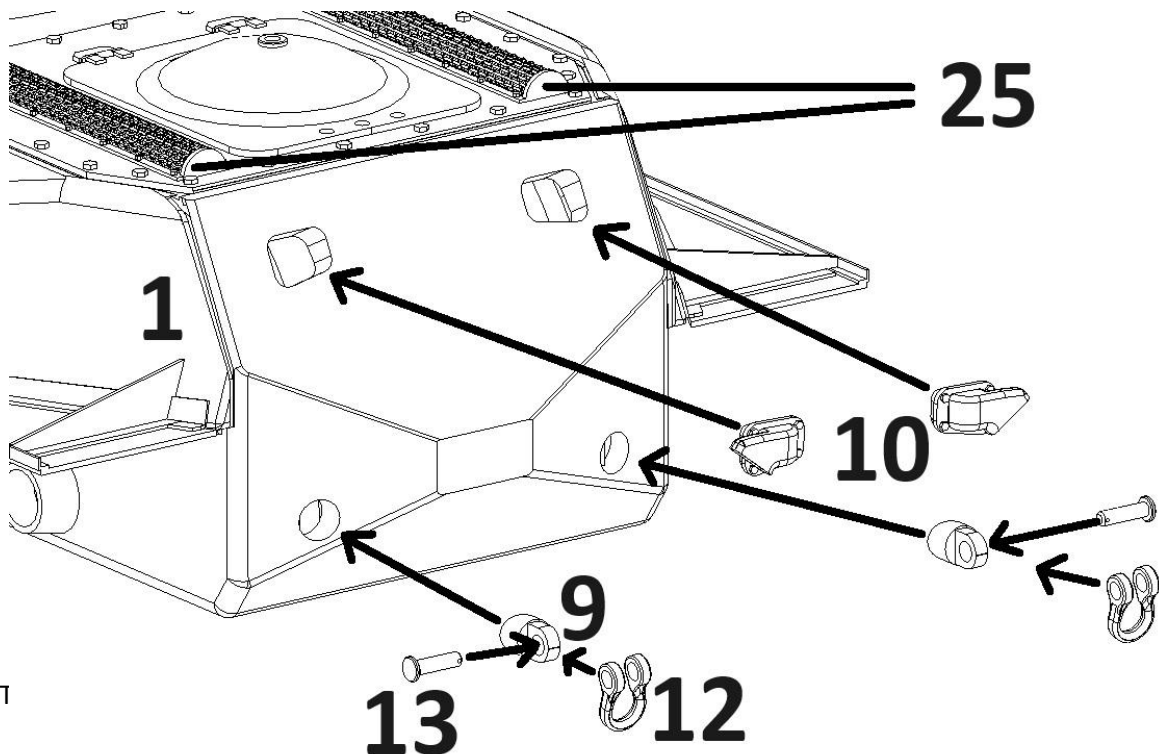
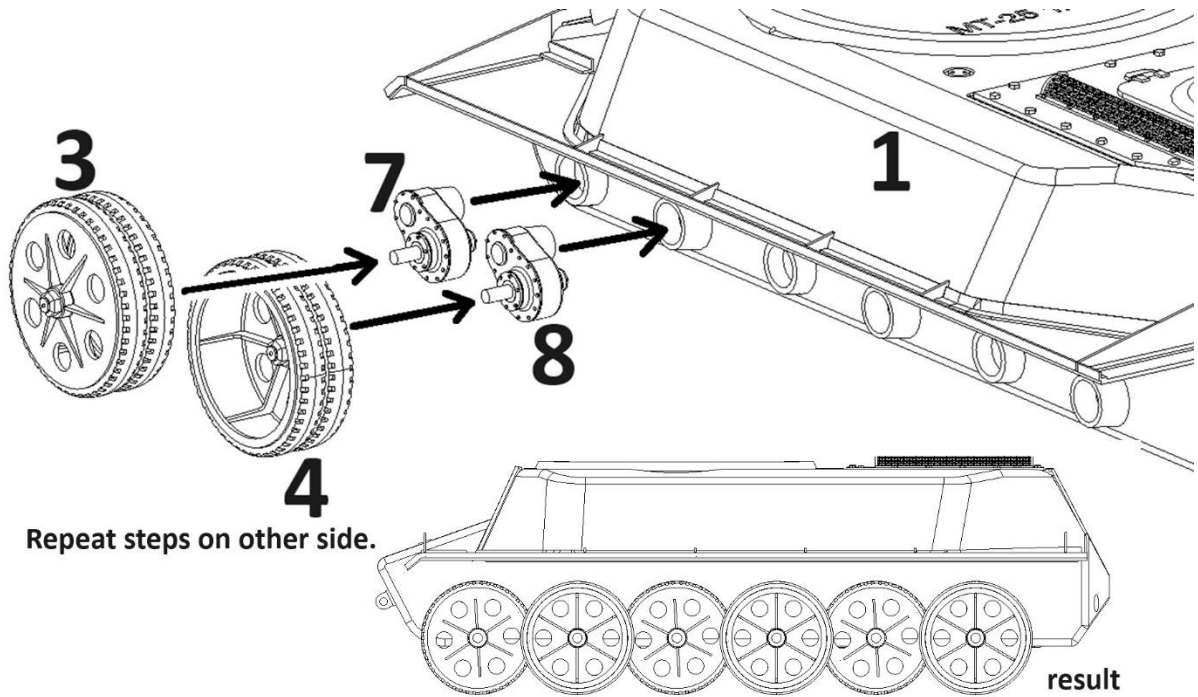
Besides the letter and drawings, not much is known about this vehicle. No prototypes were build as the Red army staff did not regard this overly complex vehicle a usefull addition tot he military.

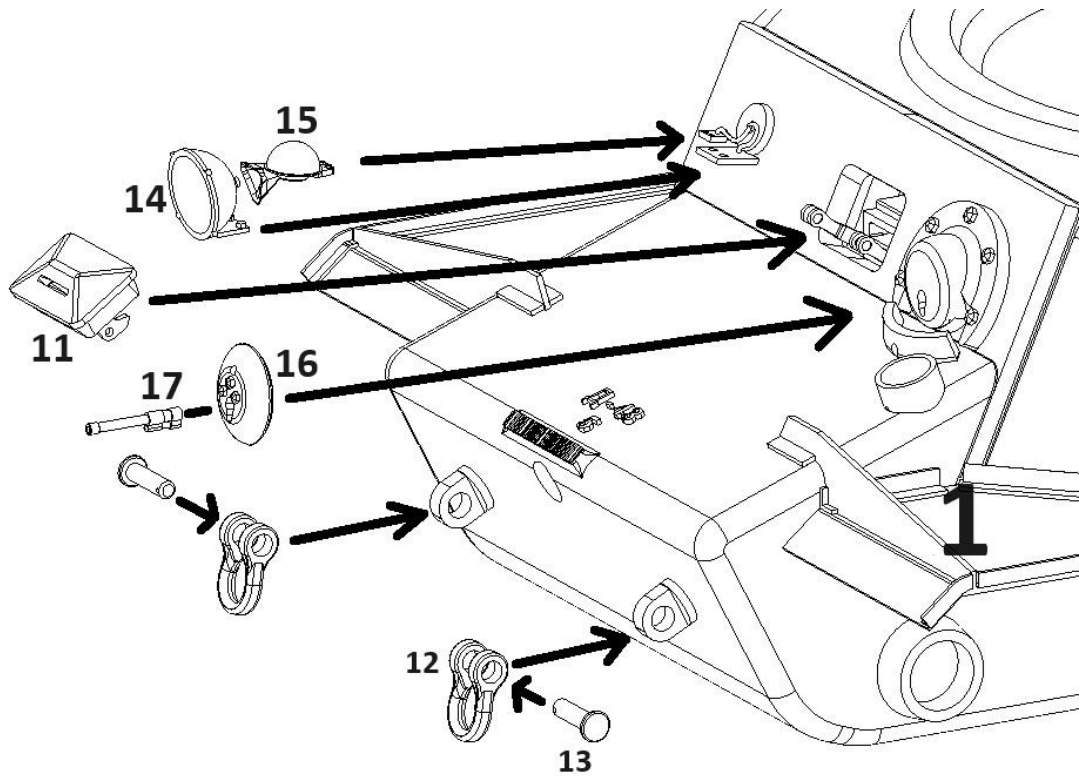
Source: TankArchives website

(The model you have bought is based on original concept drawings and not on videogame models. Some parts were borrowed from other soviet tanks, mainly the KV & IS series, as the original drawings left some room for interpretation.)

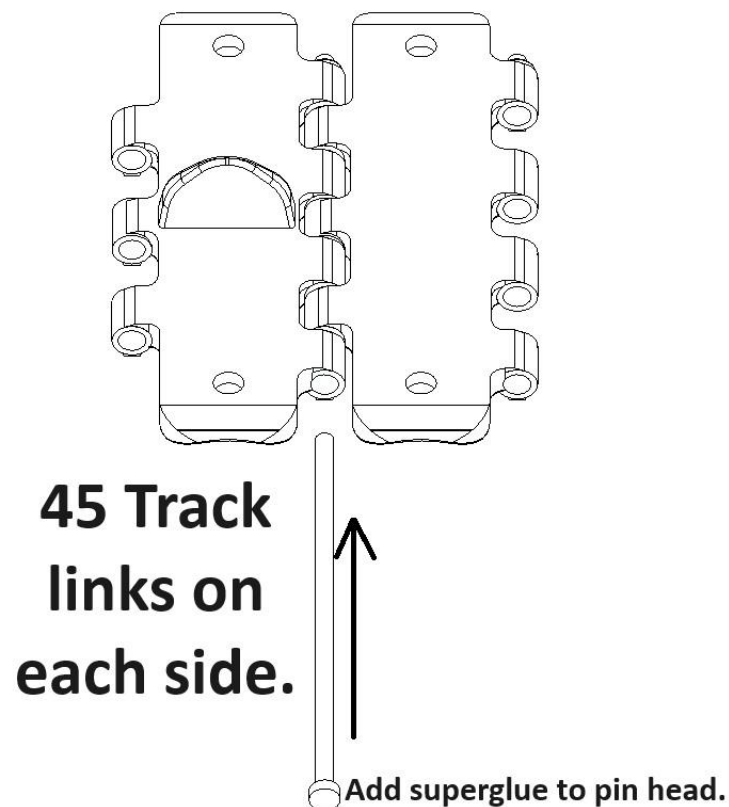
Instructions:

1. Carefully remove all the supports from the parts by using a cutter dremel or a saw.
2. Add texture on the hull and turret and recreate weld seams. Also fill the drainage hole in the front of the hull.
3. Sand away any remaining layer lines.
4. Follow the pictures below to assemble the model using super-glue.

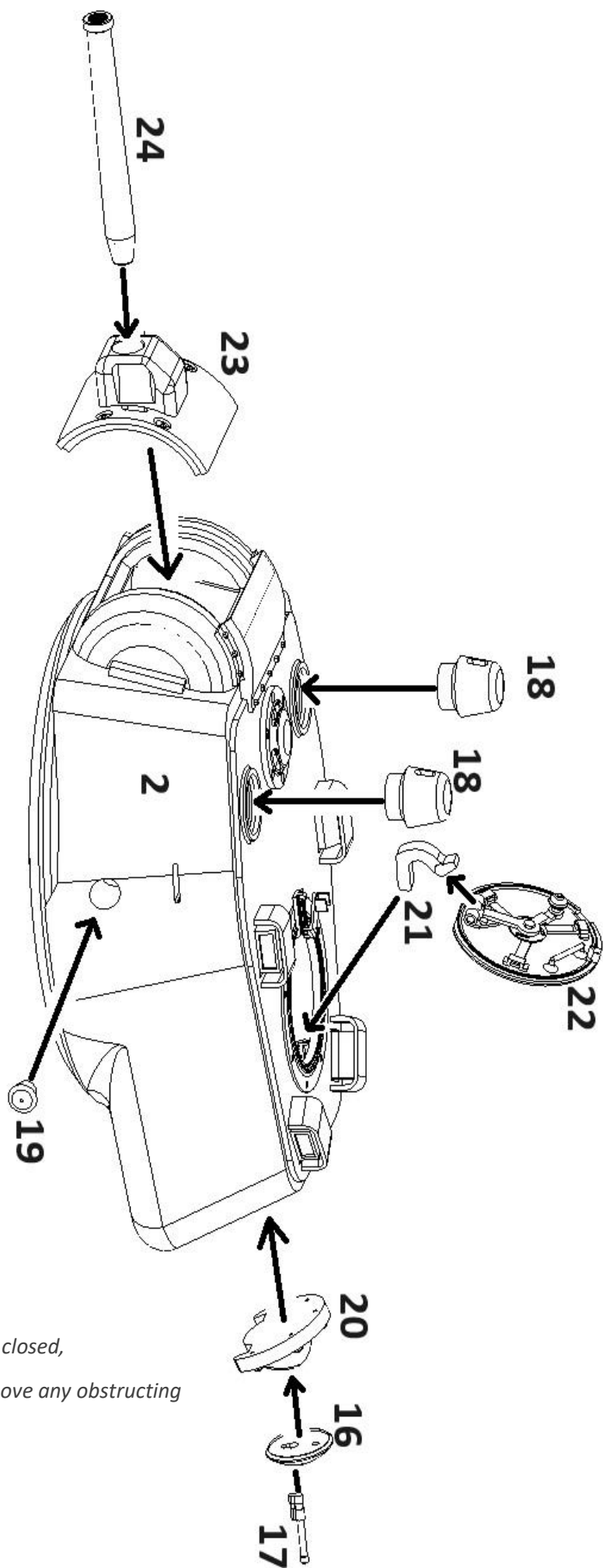




To depict the drivers viewport closed, please remove the viewport support arms.



Track A is for the left side, track B is for the right side.



*To depict the commanders hatch closed,
please leave out part 21 and remove any obstructing
internal parts.*



ResinTechModels@gmail.com
Find us on Facebook or Instagram!